

Data not moving quick enough?

INFINITY connectors.com

Introducing Amphenol's
Infinity series of products for speeds
up to 75 Gbps bandwidth
and meets SFF-8470.

INFINIBAND™

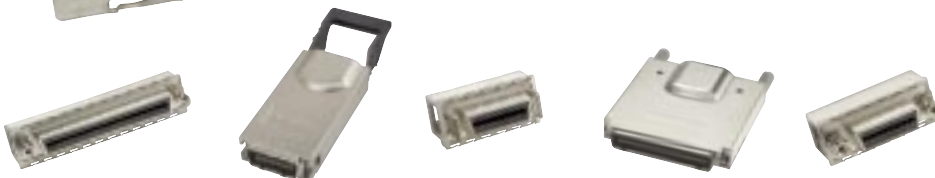
FIBRE CHANNEL

10 GB ETHERNET

SAS

Amphenol®

Data / Telecom Products



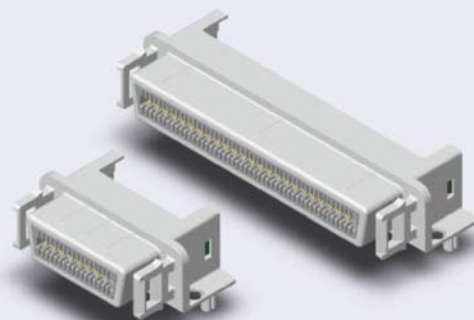
InfiniBand™ 4X / 12X Fibre Channel 10 Gbps Serial Attached SCSI

**High Speed
Receptacle
InfiniBand™
Fibre Channel
Serial Attached SCSI**

DESCRIPTION

Amphenol Canada's new inter-connection system was designed for the 4X & 12X interface for the next generation InfiniBand™ I/O applications. This new connector was developed to facilitate data transfer at rates up to 10 Gbit/s & 30 Gbit/s as required by InfiniBand™ and Fibre Channel products as well as Serial Attached SCSI.

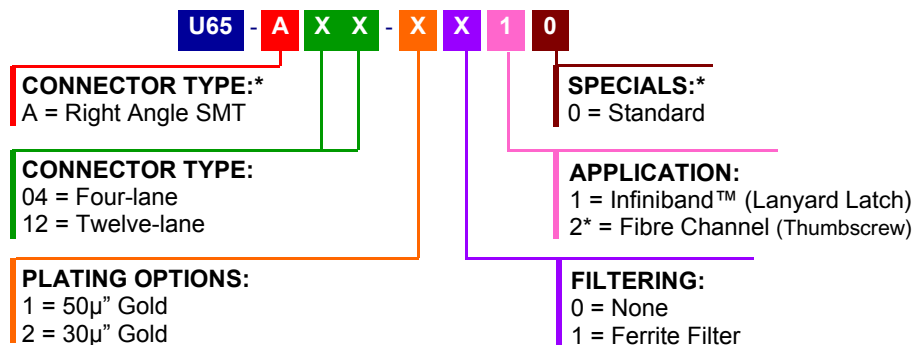
This family of products is available in variety of plugs and receptacles - all in small-form-factor configurations which will fit multiple connectors into a PCI bracket.



PRODUCT FEATURES	APPLICATION
<ul style="list-style-type: none"> • High - density • Hot plugable • Lanyard latching system • Blind mating • Controlled impedance • High speed differential signaling design • Meets SFF-8470 Specification 	<ul style="list-style-type: none"> • InfiniBand™ 4X / 12X • Fibre Channel • 10 Gb Ethernet • Serial Attached SCSI

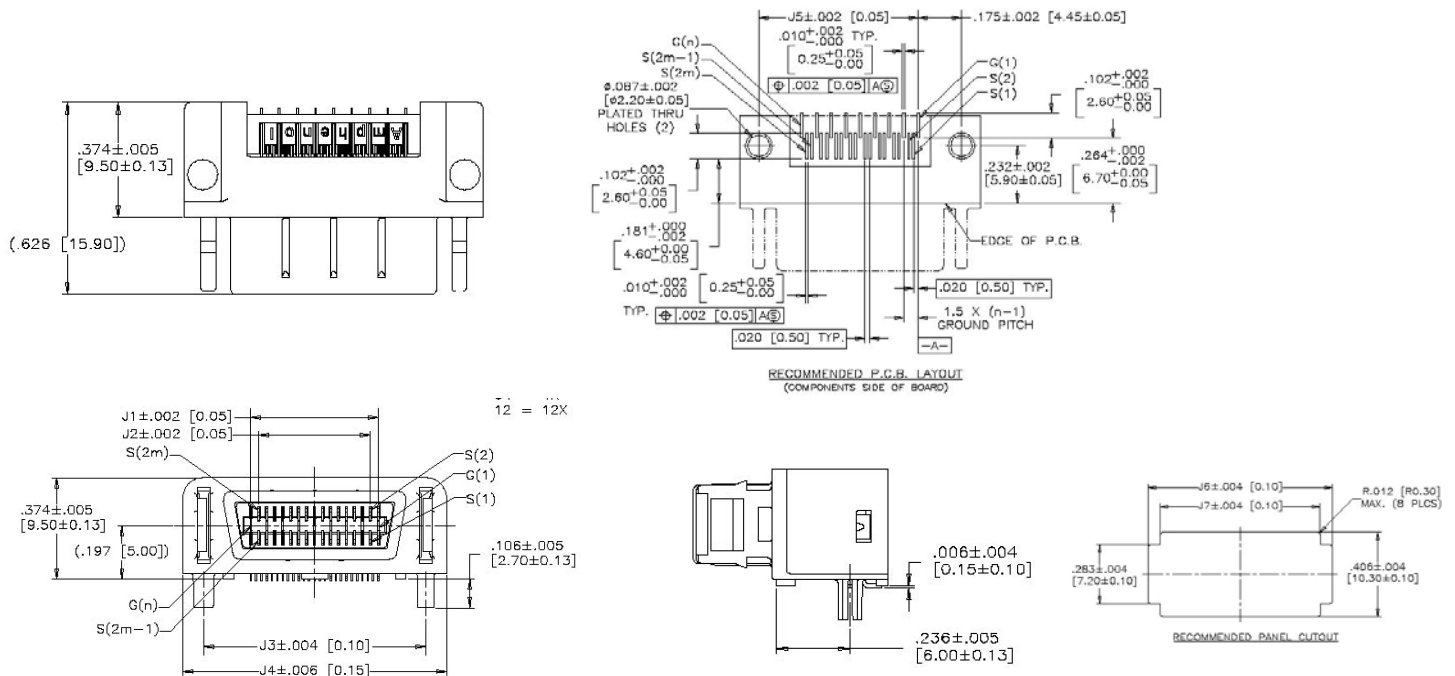
ORDERING INFORMATION

Amphenol®



* For other connector types and keying options, consult factory or drawings

MECHANICAL SPECIFICATIONS



ELECTRICAL AND ENVIRONMENTAL DATA

Current Rating:	0.5 Amps Maximum / Contact
Contact Resistance:	80mΩ Maximum Initial
Insulation Resistance:	1000 Megohms Minimum
Working Voltage:	30 VAC
Operating Temperature:	-40°C to +85°C
Cycle Life:	250 Mating Cycles

MATERIAL SPECIFICATIONS

Plastic Insert:	High Temperature Resistant Nylon Flammability Rating - UL94V-0
Contacts:	Phosphor Bronze Plating - 50μ" [1.27μm] min. or 30μ" [.076μm] min. Gold over 50μ" [1.27 μm] min. Nickel on contact mating area 150μ" [3.81 μm] min. Tin-Lead (90/10) over 50μ" [1.27 μm] Nickel on PCB termination
Shield:	Die Cast Plating - 100μ" [2.54 μm] min. Tin-Lead (90/10)

InfiniBand™ is a trademark of InfiniBand Trade Association

Amphenol®
Data/ Telecom Products

Telephone : (416) 754-5656
Facsimile : (416) 754-8668

Email: sales@amphenolcanada.com
Website: www.infinityconnectors.com

© Amphenol Canada Corp.
Specifications subject to change without notice
Printed in Canada
Designed by ACC
CATALOGUE # ADT JP03-R0-0204
Electronically Modified 09-03

20 Melford Drive, Toronto, Ontario
Canada, M1B 2X6

InfiniBand™ 4X / 12X Fibre Channel 10 Gbps Serial Attached SCSI (SAS)

**High Speed
Plug
InfiniBand™
Fibre Channel
Serial Attached SCSI**

DESCRIPTION

Amphenol Canada's new inter-connection system was designed for the 4X & 12X interface for the next generation InfiniBand™ I/O applications. This new connector was developed to facilitate data transfer at rates up to 10 Gbit/s & 30 Gbit/s as required by InfiniBand™ and Fibre Channel products as well as Serial Attached SCSI.

This family of products is available in variety of plugs and receptacles - all in small-form-factor configurations which will fit multiple connectors into a PCI bracket.



PRODUCT FEATURES

- High - density
- Hot pluggable
- Blind mating
- Controlled impedance
- High speed differential signaling design
- Meets SFF-8470 Specifications

APPLICATION

- InfiniBand™ 4X / 12X
- Fibre Channel
- 10 Gb Ethernet
- Serial Attached SCSI

ORDERING INFORMATION

Amphenol®

U66 - X X X - X X X 0

PCB STYLE / PLATING OPTIONS

N = Non equalized PCB / 50 µ" Gold
L = Non equalized PCB / 30 µ" Gold
G* = Equalized PCB / 50 µ" Gold
K* = Equalized PCB / 30 µ" Gold

CABLE TYPE:

04 = Four-lane (4X)
12 = Twelve-lane (12X)

CABLE SIZE:

1 = 24 AWG wire (4X only)
2 = 26 AWG wire
3 = 28 AWG wire

SPECIALS: **

0 = Standard

APPLICATION:

1 = InfiniBand™ (Lanyard Latch)
2* = Fibre Channel (Thumbscrew)

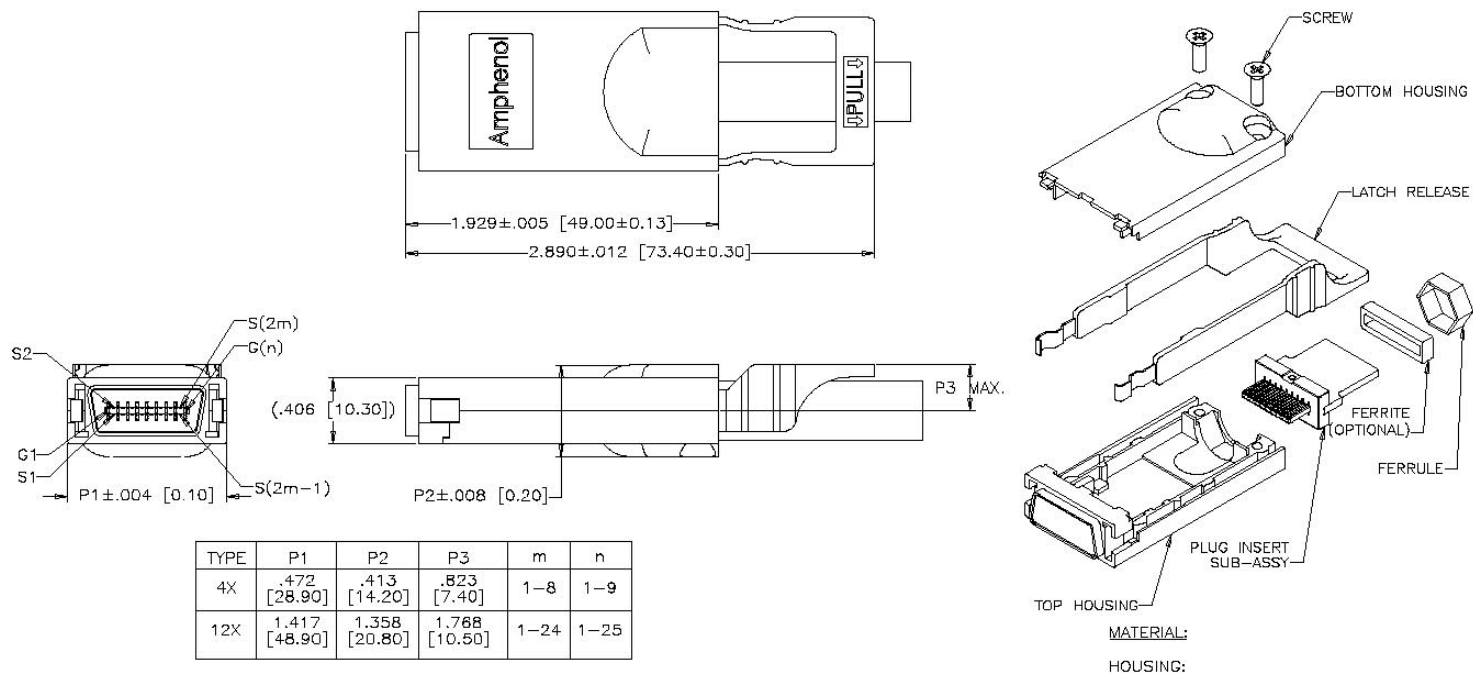
CABLE SIZE:

0 = No Ferrule / Non - Filtered
1 = With Ferrule / Non - Filtered
2 = No Ferrule / Ferrite Filter Block (4X only)
3 = With Ferrule / Ferrite Filter Block (4X only)

* future option

** For keying options consult factory or drawings

MECHANICAL SPECIFICATIONS



ELECTRICAL AND ENVIRONMENTAL DATA

Current Rating: 0.5 Amps Maximum / Contact

Contact Resistance: 80mΩ Maximum Initial

Insulation Resistance: 1000 Megohms Minimum

Maximum Voltage: 30 VAC

Operating Temperature: -40°C to +85°C

Cycle Life: 250 Mating Cycles

MATERIAL SPECIFICATIONS

Plastic Insert: High Temperature Resistant Nylon
Flammability Rating - UL94V-0

Contacts: Phosphor Bronze
Plating - 50μ" [1.27μm] min. or 30μ" [.076μm] min. Gold over 50μ" [1.27 μm] min. Nickel on contact mating area
150μ" [3.81 μm] min. Tin-Lead (90/10) over 50μ" [1.27 μm] Nickel on PCB terminations

Shield: Die Cast
Plating - 100μ" [2.54 μm] min. Tin-Lead (90/10)

InfiniBand™ is a trademark of InfiniBand Trade Association

Amphenol®

Data/ Telecom Products

Telephone : (416) 754-5656
Facsimile : (416) 754-8668

Email: sales@amphenolcanada.com
Website: www.infinityconnectors.com

20 Melford Drive, Toronto, Ontario
Canada, M1B 2X6

© Amphenol Canada Corp.
Specifications subject to change without notice
Printed in Canada
Designed by ACC
CATALOGUE # ADT JP04-R0-0204
Electronically Modified 09-03